

# Risk Analysis of Occupational Health and Safety in Mechanical Engineering Workshop Room at VHS Taman Siswa 2 Jakarta Using the HIRARC Method

Riska Kurnia, Fikri Azhar, Himawan Hadi Sutrisno, Jafar Amirruddin, Nugroho Yoga

<sup>1</sup>Fire Material and Safety Laboratory, Jakarta State University, Indonesia  
E-mail: [riskashinee.924@gmail.com](mailto:riskashinee.924@gmail.com)

## ABSTRACT

Riska Kurnia, Fikri Azhar, Himawan Hadi Sutrisno, Jafar Amirruddin, Nugroho Yoga, 2025. Risk Analysis of Occupational Health and Safety in Mechanical Engineering Workshop Room at VHS Taman Siswa 2 Jakarta Using the HIRARC Method.

Many people are not aware of the occupational health and safety risks that exist in the work environment. Therefore, it's necessary to carry out a hazard risk analysis to find out the hazards contained in the environment. This study conducted an analysis of occupational health and safety risks in a machining engineering workshop at VHS Taman Siswa 2, Jakarta. This type of research is descriptive research with a qualitative approach using the case study method. The data analysis model uses the *Miles and Huberman technique* by reducing data, presenting data, and drawing conclusions or verification. From this study, 41 hazards were identified, with 24 low-risk hazards, 11 moderate-risk hazards, and 6 high-risk hazards. Risk control in the workshop consists of 26 planned risk control measures and 10 unplanned risk control measures. The researcher suggests that the management of VHS Taman Siswa 2 Jakarta can carry out internal audits and scale checks by paying attention to the OHS culture in the machining workshop area by involving all workshop users, namely the head of the workshop, teachers, technicians, and students.

**Key Words:** Occupational Health and Safety, Risk Analysis, Risk Level.

## INTRODUCTION

Occupational Health and Safety (OHS) is one of the areas of public health that focuses on the working community, both in the formal and informal sectors. OHS consists of three key components—work capacity, work environment, and workload—which must interact harmoniously to achieve optimal occupational health outcomes [1]. Handling OHS problems in the workplace must be carried out comprehensively, including in workshops and laboratories within educational institutions [2]. Education plays a vital role in shaping quality human resources capable of competing in the global era [3].

Every workplace should implement occupational health and safety, particularly in vocational high schools where students interact directly with hazardous materials, machines, and equipment [4]. One crucial aspect in vocational education institutions managing infrastructure—including buildings, workshops, and laboratories—is the occupational health and safety of the school community [5]–[8]. Potential OHS threats in vocational high schools generally include workshop proximity to classrooms, exposure to high noise levels from machines, and the use of heat sources in practical environments [9]–[12]. Fire accidents can occur anywhere and at any time, so adequate fire prevention and mitigation training is crucial. Enhancing knowledge of fire hazards can significantly contribute to reducing future fire incidents [9]. Therefore, analyzing potential hazards in workplaces becomes essential.

Neglecting OHS standards for the sake of work efficiency remains a common issue—for example, using substandard tools or materials just to complete tasks faster [2]. Optimization efforts in education and training must still adhere to safety and health principles. Safety facilities such as emergency stairs, exits, corridors, lighting, directional signs, and alternative power sources should be designed in compliance with OHS standards [13], [14]. At VHS Taman Siswa 2 Jakarta, there were approximately four work accidents recorded between 2015–2020, indicating a low awareness of OHS practices among students. Observations from machining workshops showed frequent unsafe behaviors when operating machines, demonstrating insufficient knowledge of OHS among students and highlighting the urgent need for systemic changes to prevent accidents [15].

## **MATERIALS AND METHODS**

The analysis of this research uses the HIRARC method with the data analysis technique of the *Miles and Huberman* model. The *Miles and Huberman* model analysis process consists of three steps. First, do the reduction data by collecting workshop condition data from observations, which are categorized into 7 variables, including workshop conditions and potential hazards in turning, milling, drilling, grinding, welding, and bench work activities. The second is by presenting data in the form of an HIRARC table, and the last one is interesting conclusions or verification of the risks that occur. The flow chart can be seen below.

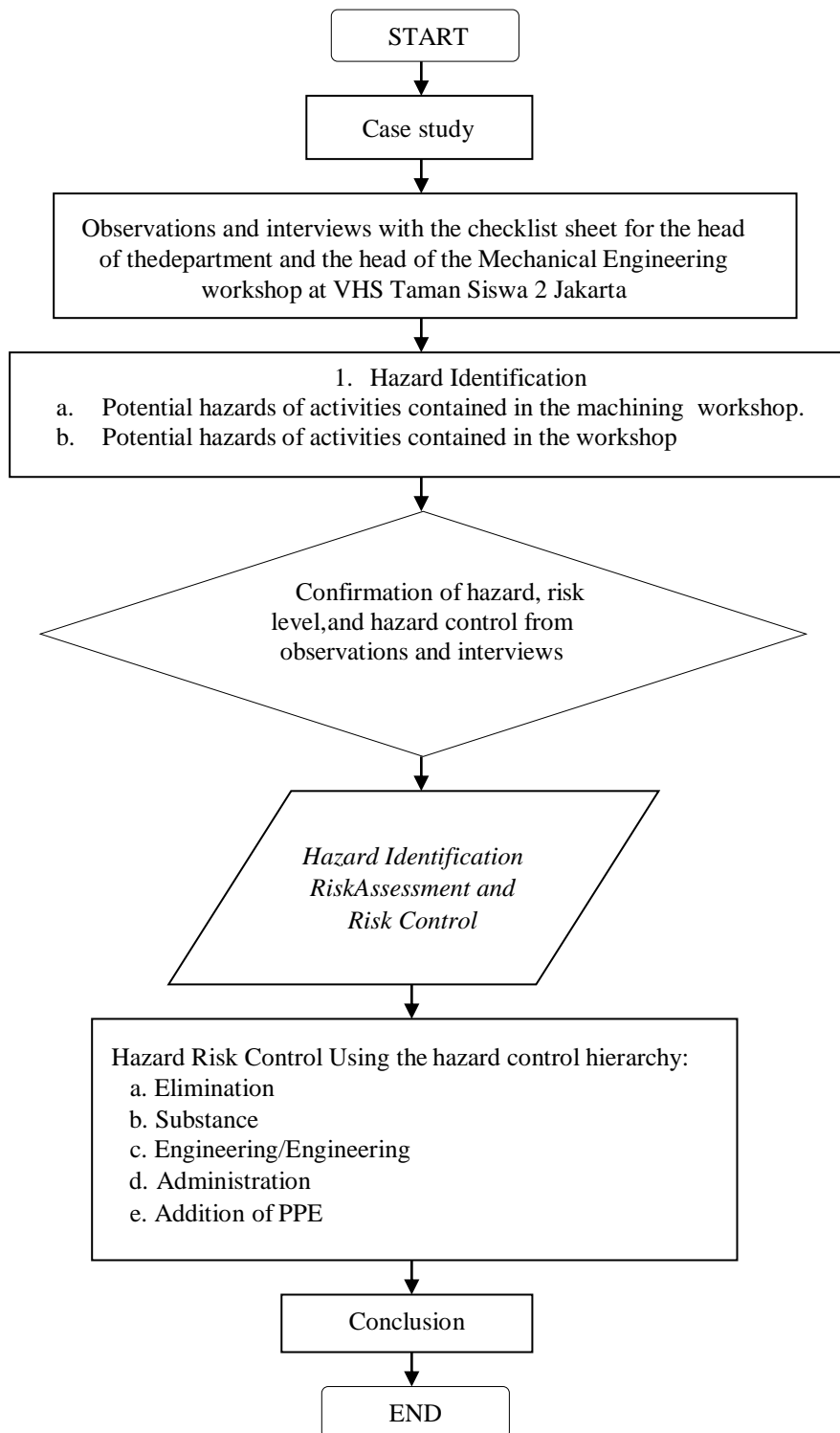


Figure 1. Flowchart

### Observation and Interview

Observations and interviews were conducted at the machining workshop of VHS Taman Siswa 2 Jakarta by filling out the checklist sheet for the head of the department and the head of the machining workshop for VHS Taman Siswa 2 Jakarta.

#### Hazard Identification

After getting the results from observations and interviews, determine what potential hazards occur in the machining workshop at the school.

#### Determining the Level of Hazard Risk

Determining the level of this hazard risk through the HIRARC method based on the *likelihood* and *consequence* values.

#### Hazard Confirmation, Risk Level, and Hazard Control

By doing an analysis using the HIRARC method, you will get the potential hazards that occur, the level of risk that exists, and how to control these hazards.

#### Hazard Risk Control


This hazard risk control is the final result of the above analysis. After knowing what the potential hazards are, how many levels of risk there are, then developing hazard risk controls to reduce the hazards that occur in the workplace.

## RESULTS AND DISCUSSION

Based on several series of activities carried out, the results of each activity are:

#### Observation and interview

Based on the results of observations and interviews, the results obtained are photo documentation, conditions, and potential hazards contained in the workshop, which are as follows:

No.	Documentation	Workshop Condition	Danger Occurs
1.		There are no instructions for use on lathes, mills, drills, grinders, welding, or bench work.	Students potential experience errors in operating the machine that can cause injury or accidents at work.

---

2.		There are no posters related to the importance of OHS and the dangers posed when using the machines.	Students can be indifferent, careless, and not know the result, and cause accidents at work.
3.		There isn't an evacuation route.	Process evacuation can be delayed if an accident or fire becomes bigger.
4.		The grinding area and the welding area are too close.	A student/teacher could experience eye injury because of the area grinding and welding too close. Because grinding and welding areas have different PPE.
5.		Extinguish the light fire that is located outside the workshop.	Because the fire extinguisher is not within the workshop area, it can be panic when there is a fire.

---

---

6.		There is a hand washing area in the machining room, which can cause the wet floor to be slippery due to splashing water.	Which slippery floor could cause a student/teacher to experience injury due to a slip?
7.		There are no markings for areas requiring special PPE, such as grinding and welding areas.	Cause accident or consequent disease work/practicum, which is conducted by students/teachers.
8.		There isn't safety in the grinding area.	Splashes of grinding metal or grams can hit students/teachers in the vicinity. It can cause various diseases if exposed continuously.

---

After getting the results of the workshop conditions, proceed with the identification of the hazards that exist in the VHS Taman Siswa 2 Jakarta workshop.

### **Hazard Identification**

At the VHS Taman Siswa 2 Jakarta workshop, there are 6 process activities, namely the turning process, the milling process, drilling, grinding, welding, and bench work processes. Several potential hazards occur in each process of these activities, namely:

**Turning process**

In the types of activities that exist in the turning process, there are potential hazards, namely:

No.	Type Activity	Potential Hazards
1.	Install Chisel	Get hit by a sharp chisel Blunt chisel : - Could cause a sound to be noisy to other hearing - Could cause too much heat - Could result in a chisel being broken, could bounce and hurt students The chisel is not installed correctly on the tool post - Installation which no right can result in a chisel easy blunt, even broken - A chisel which not installed correctly could bounce and injure students
2.	Install object work	- The workpiece is not properly attached to the tight. - Could result in object work being damaged even bounce off, injuring students.
3.	Laying keys	Putting keys close with part moving machinery can cause the keys to shift and then bounce, hurting students.
4.	Process Turning	- Caught bounce used turning, which hot cause irritation to the skin - A dress or a wearpack which have an arm length can be wrapped around the spindle machine, which turns

From the results above, the potential hazards were seen through the types of activities and interviews with the head of the workshop and teachers from SMK Taman Siswa 2 Jakarta.

**Milling Process**

In the types of activities that exist in the milling process, there are potential hazards, namely:

No.	Type Activity	Potential Hazards
1.	Installing the milling knife	Injured from being scratched by a milling knife's sharp edge
2.	Install the object work on the vise	An installation object work which not tight enough may cause the workpiece or the eye knife milling to break and bounce the knife.
3.	Process practice milling	- Hair and dress arm long could entangle the axis machine, which turns. - Exposed flakes used milling, which could cause skin irritation.

**Drilling Process**

In the types of activities that exist in the drilling process, there are potential hazards, namely:

No.	Type Activity	Potential Hazards
1.	Install Eye Drill	Wounded because scratched drill bit, which is sharp

2.	Install the object work on the vise.	The installation of workpieces that are not tight can cause the drill bit to break and bounce, which can hurt students.
3.	Process Drill	<ul style="list-style-type: none"> <li>- Hair and dress arm long could entangle the axis machine, which turns</li> <li>- Exposed to debris from the drilling hot can cause skin irritation</li> </ul>
4.	Clean chips used for drilling	Used drilling or chips, which were usually long and sharp and could hurt the student's hand.

**Grinding Process**

In the types of activities that exist in the grinding process, there are potential hazards, namely :

No	Type of activity	Potential Hazards
1.	Installing the workpiece	Installing a workpiece that is not properly positioned can result in pinched hands.
2.	Hone	<ul style="list-style-type: none"> <li>- Sparks resulting from grinding can be irritating if in contact with skin.</li> <li>- The dust produced can interfere with breathing.</li> <li>- Fingers can scald due to the heat of the workpiece that has been grinded.</li> <li>- Sparks can ignite objects in the vicinity of flammable grinding machines.</li> </ul>
3.	Use of grinding machines on transportation routes	Metal sparks can hit other students.

**Welding Process**

The welding process there are potential hazards, namely:

No.	Type Activity	Potential Hazards
1.	Connecting welding mass pliers	If you connect the pliers when the time is out of focus, it can your hands to get pinched.
2.	Install electrode	When no be careful, your hand can pinched the plier'sholder electrode.
3.	Process welding	<ul style="list-style-type: none"> <li>- If the ventilation system isn't good then smoke burning results welding can confined in the room and inhaled by students.</li> <li>- Exposed to ultraviolet and infrared radiation red could cause irritation on skin.</li> <li>- Splash results weld could caught student and cause scald or burns</li> </ul>

- 
- |    |                                 |   |
|----|---------------------------------|---|
| 4. | Process cool material           | Hand can touched hot metal.   |
| 5. | Clean material with slag hammer | <ul style="list-style-type: none"> <li>- You can hit your hand with a hammer if you are not be careful</li> <li>- Hand student can scratched sharp materials</li> </ul> |
- 

***Bench Work Process***

In the types of activities that exist in the bench work process, there are potential hazards, namely:

---

No.	Type Activity	Potential Hazards
1.	Hone	Your hand can be pierced by sharp and fine bits of shavings
2.	Saw off	Hand wounded and can scratched saw blade
3.	Work Plate	The potential of the student's hand is scratched by the sharp and rough edge of the plate

---

**Determining the Level of Hazard Risk**

After getting the results from observations, interviews, and identifying the hazards, the next step is to determine the level of risk of these hazards. To determine the level of hazard risk using the HIRARC method, by obtaining the following results:

***Turning Process***

---

No	Type of activity	Danger	Potential Hazards	Frequency	Severity	Risk Ranking	Risk Level
1.	Installing Chisel	Sharp chisel	The use of sharp chisels can injure students' hands	2	1	1	Low
		Dull chisel	It can cause noise that interferes with hearing	3	2	6	Moderate
		Dull chisel	Can result in broken chisels that can bounce and injure students	1	2	2	Low
		Dull chisel	Generates excessive heat that can hit student's hands	2	2	4	Low
		The chisel is not properly attached to the tool post	Improper installation can result chisel being easily blunted and even broken and bounced, injuring students.	2	2	4	Low

---

2.	Installing the workpiece	The workpiece is not properly attached to the chuck	Can cause the workpiece to be damaged and even bounce off injuring students	2	1	2	Low
3.	Laying the keys	Place the key close to the moving parts of the machine.	Causing the keys to shift and then bounce off, injuring students	1	3	3	Low
		Hot and sharp.	Being hit by a hot turning former bounce can cause akin irritation	3	2	6	Moderate
4.	Turning process	Long sleeve wearpack and long hair	A student with long sleeves wearpack and long hair can get wrapped around when the rotating machine spindle	1	3	3	Moderate

*Australian Standard on Risk Management AS/NZS 4360 : 1999*

### ***Milling Process***

No	Type of activity	Danger	Potential Hazards	Frequency	Severity	Risk Ranking	Risk Level
1.	Installing the milling knife	Use of a sharp milling knife	Injured by being scratched by a sharp milling knife	2	1	2	Low
2.	Mounting the workpiece on the vise	The workpiece is not suitable for placement	The installation of a workpiece that isn't tight can cause the workpiece or milling blade to break and bounce, injuring students	2	1	2	Low
3.	Process of milling the	Long sleeve wearpack and long hair	A student with long sleeves and long hair can get wrapped around when the rotating machine spindle	1	3	3	Moderate
			Exposed to hot milling flakes can cause skin irritation	3	2	6	Moderate

Australian Standard on Risk Management AS/NZS 4360 : 1999

**Drilling Process**

No	Type of activity	Danger	Potential Hazards	Frequency	Severity	Risk Ranking	Risk Level
1.	Installing the drill bit	Sharp drill bit	Students' hands can be scratched by a sharp drill bit.	2	1	2	Low
2.	Mounting the workpiece on the vise	Improper workpiece installation	That workpieces are not securely fastened can cause the drill bit to break and bounce. The student can be hit by drill bit.	2	1	2	Low
3.	Drilling process	Long sleeve wearpack and long hair	Student with long sleeve wearpack and long hair can get wrapped around when the rotating machine.	1	3	3	Moderate
		Drilling flakes	Exposed to hotdrilling flakes can cause skin irritation	3	2	6	Moderate
4.	Cleaning up drilling scraps	Long and sharp cuttings	The drilling marks or scraps produced are usually long and sharp so they can injure student's hands	3	1	3	Low

Australian Standard on Risk Management AS/NZS 4360 : 1999

**Grinding Process**

No	Type of activity	Danger	Potential Hazards	Frequency	Severity	Risk Ranking	Risk Level
1.	Installing the workpiece	Installing the workpiece is not in accordance with the	Can cause pinched hands	2	1	2	Low

		placement					
2.	Grinding process	Grinding sparks	Sparks resulting from grinding can be irritating if in contact with the skin.	3	2	6	Moderate
		Grinding dust	The dust produced can interfere with breathing.	3	2	6	Moderate
		Hot grinding object	Fingers can scald due to the heat of the workpiece that has been grinded	2	2	4	Low
		Use of grinding machines on transportation routes	Metal sparks can hit other students	1	1	1	Low

*Australian Standard on Risk Management AS/NZS 4360 : 1999*

**Welding Process**

No	Type of activity	Danger	Potential Hazards	Frequency	Severity	Risk Ranking	Risk Level
1.	Connecting the pliers	Installing carelessly	Connecting the pliers if you don't concentrate can cause your hands to get pinched.	2	1	2	Low
2.	Installing the electrodes	Installing carelessly	If you're not careful, your hands can get pinched by the electrode holder.	2	1	2	Low
3.	Process welding	The ventilation system is not good	The ventilation system is not good, so the smoke from the welding combustion is trapped in the room and inhaled by student.	3	3	9	High

		Exposure ray ultraviolet and infrared red	Exposure to radiation, ultraviolet light, and infrared could cause irritation on the skin.	3	3	9	High
		splash results welding	Result splash weld can hit by students and cause blister or burn wounds	3	2	6	Moderate
4.	Process cool material	Object work	Hand can just touch metal hot	3	1	3	Low
5.	Process clean material with a hammer slag	Processing with no careful	Can just hand hammered if not be careful	2	1	2	Low
			Hand student can scratched material which sharp	2	1	2	Low

Australian Standard on Risk Management AS/NZS 4360 : 1999

**Bench Work Process**

No	Type of activity	Danger	Potential Hazards	Frequency	Severity	Risk Ranking	Risk Level
1.	Hone	Sharp and smooth flakes	The hand is pierced by sharp and fine splinter shavings	2	1	2	Low
2.	Sawing	Sharp saw blade	Hands can be injured and scratched by saw blades	2	1	2	Low
3.	Plate work	Sharp and rough plate edges	Can cause injury to students	3	1	3	Low

Australian Standard on Risk Management AS/NZS 4360 : 1999

**Conditions at the Workshop**

No	Workshop Condition	Danger	Potential Hazards	Frequency	Severity	Risk Ranking	Risk Level
1.	There are no instructions for use on lathes, mills, drills, grinders, welding and bench work.	Machine use error	Students have the potential to make mistakes in operating machines that can cause work injuries/accidents	1	3	3	Moderate
2.	There are no posters related to the importance of OHS and the dangers posed when using machines.	The attitude of students aware of the dangers of practicum	Students can be in different, act careless, so no know as a result and cause accident work	2	1	2	Low
3.	No evacuation route instructions	It is not clear which evacuation route exists	Process evacuation can be delayed which cause accident or events like fire becomes the more critical.	1	4	4	High
4.	The grinding area and the welding area are too close together	Differences in the use of PPE	Student/teacher could experience eye injury because of area grinding and welding too close. Because in area grinding and welding different PPE.	1	2	2	Low
5.	Extinguisher light fire that located outside workshop	Inappropriate placement of fire extinguishers	Cause panic on when it happened accident work as fire because of the fire extinguisher not at within the area workshop.	1	4	4	High
6.	There is a hand washing area in the machining room which can cause the wet floor to be slippery due to splashing water.	Slippery floor	Floor which slippery could cause student/teacher experience injury due to slip	2	2	4	Low
7.	There are no markings for	Unclear safety sign	Cause accident or consequent disease	4	3	12	High

	areas requiring special PPE such as grinding and welding areas.		work/practicum which is conducted students/teachers.				
8.	There is no safety in the grinding area	Sparks	Metal sparks resulting from grinding or grams can hit students/teachers in the vicinity which have the potential to cause various diseases if exposed continuously.	4	2	8	High

Australian Standard on Risk Management AS/NZS 4360: 1999

### Hazard Confirmation, Risk Level, and Hazard Control

After conducting an analysis using the HIRARC method, you will get the potential hazards that occur, the level of risk that exists, and then confirm with the head of the workshop. If it is correct, then plan to control the risk of the hazard.

### Hazard Risk Control

When it is known the identification of hazards, potential hazards, and the level of existing hazard risks is known, a plan to control these hazard risks. Controls carried out by VHS Taman Siswa 2 Jakarta area.

### Conditions at the Workshop

No	Workshop Condition	Danger	Potential Hazards	Hazard Control	Action Plan		
					Action	By Who	when
1.	There are no instructions for use on lathes, mills, drills, grinders, welding, or bench work.	Machine use error	Students have the potential to make mistakes in operating machines that can cause work injuries/accidents.	Provide information about the SOP for using the machine by attaching it to the machine.	-	-	not planned
2.	There are no posters related to the importance of OHS and the dangers associated when using machines.	The attitude of students who are different to the dangers of practicum	Students can act carelessly in different ways, Act carelessly, so not know the result and cause an accident at work	Make posters about the importance and the dangers of prioritizing occupational safety and health by sticking them on the walls room	-	-	Not planned

3.	No evacuation route instructions	It is not clear which evacuation route exists	Process evacuation can be delayed, which can cause accidents or events like fire, becoming more critical.	Provide evacuation route information by sticking a sticker or sign on the floor or on the wall of the room	-	-	Not planned
4.	The grinding area and the welding area are too close together	Differences in the use of PPE	A student/teacher could experience eye injury because of the area grinding and welding too close. Because in the area of grinding and welding, different PPE his	- Moving welding and grinding areas  - Provides a barrier between the welding area and the grinding area	-	-	Not planned
5.	Extinguish the light fire that is located outside the workshop	Inappropriate placement of fire extinguishers	Caused panic when it happened accident worked as a fire because the fire extinguisher was not within the workshop area.	Move the fire extinguisher into a machining workshop that can be easily reached	Move the fire extinguisher to a machine room that is easily accessible and visible	head of the workshop	Done this semester
6.	There is a hand washing area in the machining room, which can cause the wet floor to be slippery due to splashing water.	Slippery floor	Which slippery floor could cause a student/teacher to experience injury due to a slip?	Moving the handwashing area to the outside of the machining workshop, for example, next to the entrance to the machining workshop	-	-	Not planned
7.	There are no markings for areas requiring special PPE, such as	Unclear safety sign	Cause accident or consequent disease work/practicum, which is conducted by	Provide information about areas that require special PPE by sticking it	-	-	Not planned

	grinding and welding areas.		students/teachers.	on the wall, or on the machine or tool used.			
8.	There is no safety in the grinding area.	Sparks	Metal sparks resulting from grinding or grinding can hit students/teachers in the vicinity, which have the potential to cause various diseases if exposed continuously.	Provide barriers or provide insulation, especially in the grinding area.	-	-	Not planned

**Turning Process**

No	Type of activity	Danger	Potential Hazards	Hazard Control	Action Plan		
					Action	By Who	When
1.	Installing Chisel	Sharp chisel	The use of sharp chisels can injure students' hands	When installing/replacing the tool, do not hold the tip of the tool. Position holding the chisel securely	Give direct directions about how to install and replace a chisel before to do practice	Teacher with a head workshop	Done this semester
		Dull chisel	It can cause noise that interferes with hearing.	Sharpen the chisel. If the problem is not resolved, then you should use earplugs.	Provide direct directions on how to install and replace the chisel before doing the practicum.	Teacher with a head workshop	Done this semester
			Can result in broken chisels that can bounce and injure students	Use a chisel that is still sharp and safe to use, as well as in the appropriate placement, so that it doesn't	Provide direct directions on how to install a chisel on the toolpost	Teacher with a head workshop	Done this semester

			Can cause excessive heat and touch students' hands	loosen on the tool post	Use coolant during the turning process. If you have to remove the chisel, wait until the cold chisel	before doing the practicum	Warn students not to hold the chisel right away if it has not been cooled	Teacher with a head workshop	Done this semester
		The Chisel is not properly attached to the tool post	Improper installation can cause the chisel to be easily blunted and even broken, and bounce, injuring students	Always check the center position of the chisel, and make sure the bolts on the toolpost bind the chisel well	Always give directions to check that the chisel on the toolpost is tight or not		Teacher with a head workshop	Done this semester	
2.	Installing the workpiece	The workpiece is not properly attached to the chuck	It can cause the workpiece to be damaged and even bounce off, injuring students.	Make sure the workpiece is gripped properly, and the workpiece feeding process is not too heavy in	Always provide direction to ensure that the workpiece is properly secured to the chuck.		Teacher with a head workshop	Done this semester	
3.	Laying the keys	Place the key close to the moving parts of the machine.	It can cause the keys to shift and then bounce off, injuring students	Do not put keys or tools on a fixed head, because they can fall on the spindle when rotating	Always remind students not to carelessly put tools around the machine, and at the same time, practice		Teacher with a head workshop	Done this semester	
4.	Turning process	Hot and sharp.	Being hit by a hot turning former bounce can irritate the skin	Protects sensitive body parts, such as the eyes. Can also use cover/cover on the spindle	-	-	-	Not planned	
		Long-sleeve shirt and long hair	Wearpacks that have long sleeves and long hair can get wrapped around the	Shaving hair without wearing long sleeves and wearing a hat if	Make rules to always keep students'		Teacher with a head workshop	Done this semester	

---

rotating machine spindle. necessary hair clean and tidy

---

***Milling Process***

No	Activity Type	Danger	Potential Hazards	Hazard Control	Action Plan		
					Action	By Who	when
1.	Installing the milling knife	Use of a sharp milling knife	Injured by being scratched by a sharp milling knife	When installing/ replacing the blade, do not touch and touch the bottom edge of the blade. Position the blade securely.	Provide direct directions on how to install and replace the chisel before doing the practicum.	Teacher with a head workshop	Done this semester
2.	Mounting the workpiece on the vise	The workpiece is not suitable for placement	The installation of a workpiece that isn't tight can cause the workpiece or milling blade to break and bounce, injuring students.	Make sure the vise that binds the workpiece is in a tight position and is not backless (dol). During the milling process, always check whether the vise is still binding the workpiece tightly.	Always give direction and supervise to ensure the workpiece is properly checked on the chuck.	Teacher with a head workshop	Done this semester
3.	Process of milling the workpiece	Long sleeve wearpeack and long hair	Hair and long sleeves can get caught in the rotating shaft of the machine	Shave hair, not long. Stand not too closeto the rotating parts of the machine, or wear a hat if necessary	Make rules to always keep students' hair clean and tidy	Teacher with a head workshop	Done this semester

---

			Exposure to hot milling flakes can cause skin irritation	Protects sensitive body parts, such as the eyes. Can also use a cover/cover	Provide rules to always use PPE, such as goggles, and provide cover on the machine	Teacher with a head workshop	Done this semester
--	--	--	--	---	--	------------------------------	--------------------

**Drilling Process**

No	Type of activity	Danger	Potential Hazards	Hazard Control	Action Plan		
					Action	By Who	when
1.	Installing the drill bit	Sharp drillbit	Students' hands can be scratched by a sharp drill bit	When installing/replacing the tool, do not hold the tip of the tool. Position the chisel securely.	Provide direct directions on how to install and replace the chisel before doing the practicum.	Teacher with a head workshop	Done this semester
2.	Mounting the workpiece on the vise	Improper workpiece installation	The installation of a workpiece that is not tight can cause the drill bit to break and bounce off the student.	Make sure the vise that binds the workpiece is in a tight position and is not stuck.	Always giving direction and supervising to ensure the workpiece is properly checked on the gripper.	Teacher with head workshop	Done this semester
3.	Drilling process	Long-sleeve shirt and long hair	Hair and long sleeves can get caught in the engine shaft that rotates	Shave hair, not long. Stand not too close to rotating machine parts, or if necessary, wear a hat	Make rules to always keep students' hair clean and tidy	Teacher with a head workshop	Done this semester
		Drilling flakes	Exposure to hot drilling flakes can cause skin irritation	Protects sensitive body parts, such as the eyes. Can also use the cover/cover on the spindle	Provide rules to always use PPE, such as goggles, and provide	A teacher with a head	Done this semester

4.	Cleaning up drilling scraps	Long and sharp cuttings	The drilling marks or scraps produced are usually long and sharp, so that they can injure students' hands.	Remove the entangled and snagged scraps using pliers. Rotated counterclockwise to untie it.	Always remind students to wear gloves to protect their hands from sharp cuts.	Teacher with head workshop	Done this semester
----	-----------------------------	-------------------------	--	---	---	----------------------------	--------------------

**Grinding Process**

No	Type of activity	Danger	Potential Hazard	Hazard Control	Action Plan		
					Action	By Who	when
1.	Installing the workpiece	Installing the workpiece is not in accordance with the placement	Can cause pinched hands	Position your hands when installing the workpiece; don't hold the vise	Always giving direction and supervising to ensure the workpiece is properly checked on the gripper	Teacher with head workshop	Done this semester
2.	Grinding process	Grinding sparks	Sparks resulting from grinding can be irritating if in contact with the skin	Make sure the grinding machine uses a cover so that the sparks from grinding do not directly hit the students.	Provide rules to always use PPE, such as goggles, and cover the machine	Teacher with a head workshop	Done this semester
		Grinding dust	The dust produced can interfere with breathing	when placed near the exhaust fan. Immediately rinse body parts exposed to residual dust after grinding so as not to cause irritation or itching. itchy skin	-	-	Not planned
		Hot grinding object	Fingers can scald due to the heat of the	Provides coolant for workpieces that	Warn students not to hold the	Teacher with head workshop	Done this semester

			workpiece that has been ground	have been ground	chisel right away if it has not been cooled, and use it always use gloves		
	Use of grinding machines on transportation routes		Metal sparks can hit other students	Move the grinding machine to a safer place so it doesn't hit other students.	Move it to a safer place so as not to interfere with practicum activities.	Teacher with a head workshop	Done this semester

**Welding Process**

No	Type of activity	Danger	Potential Hazards	Hazard Control	Action Plan		
					Action	By Who	when
1.	Connecting the pliers	Installing carelessly	Connecting the pliers if you don't concentrate can cause your hands to get pinched.	Always wear gloves and concentrate during practicum.	Remind and supervise students to always be careful when connecting the pliers before practice.	Teacher with head workshop.	Done this semester
2.	Installing the electrodes	Installing carelessly	If you're not careful, your hands can get pinched by the electrode holder.	Always wear gloves and focus during practicum.	Remind and supervise students to always be careful when connecting the pliers before practice.	Teacher with head workshop	Done this semester
3.	Process welding	The ventilation system is not good	The ventilation system is not good, so the smoke from the welding combustion is trapped in the room and inhaled by the students.	Engineer the welding area to provide exhaust so that the welded fumes can be carried out of the room.	-	-	Not planned
		Exposure to ultraviolet and infrared	Exposure to ultraviolet and infrared radiation	Always use an apron and welding	Remind and supervise students to always be	Teacher with head workshop	Done this semester

		rays	can cause skin irritation.	mask when doing practicum	careful when welding and not to joke		
		Welding splash	Welded sparks can hit a person and cause a scald or burn	Always use gloves, an apron, and a welding mask so that the sparks from the weld don't directly hit the student.	Remind and supervise students to always be careful and use PPE when doing welding, and not to joke.	Teacher with a head workshop	Done this semester
4.	Process cooling material	Object work	The hand can be touched by hot metal	Wear gloves and make sure the workpiece is cool with coolant so that safe to hold	Warn students not to hold the chisel directly if it has not been cooled, and always use gloves.	Teacher with a head workshop	Done this semester
5.	The process of cleaning the material with a slag hammer	work carelessly	- The hand can be hit by a hammer if not careful  - The hand can be scratched by sharp material	Use gloves when hammering in the workpiece and focus while doing so	Giving directions to students to always wear gloves and be careful during the practicum	Teacher with a head workshop	Done this semester

***Bench Work Process***

No	Type of activity	Danger	Potential Hazard	Hazard Control	Action Plan		
					Action	By Who	When
1.	Hone	Sharp and smooth flakes	fine splinter shavings	Always clean the surface of the file with a wire brush, especially before starting hone.	Remind students to always clean the file before and after the practicum	Teacher with a head workshop	Done this semester

2.	Sawing	Sharp saw blade	Hands can be injured and scratched by saw blades.	Start by sawing slowly with a pulling motion until it starts to run smoothly, and then put pressure on the saw.	Always provide direction and supervision to ensure the plate-bending process is in accordance with theory.	Teacher with a head workshop	Done this semester
3.	Work on the plate	Sharp and rough plate edges	Students can get hurt	<ul style="list-style-type: none"> <li>- Bend the remaining plate when cutting using manual scissors.</li> <li>- cutting the sharp corners of the plate</li> </ul>	Always provide direction and supervision to ensure the plate-bending process is in accordance with theory.	Teacher with a head workshop	Done this semester

The results of the research from all the descriptions of the activities above at the Machining Workshop of VHS Taman Siswa 2 Jakarta can be seen in the table as follows:

No.	Indicator	Risk of Danger	Risk Rating				Hazard Control	
			Low	Moderate	High	Extreme	Planned	Unplanned
1	Workshop Condition	8	3	1	4	-	1	7
2	Turning Activities	9	6	3	-	-	3	1
3	Milling Activities	4	2	2	-	-	4	-
4	Drilling Activities	5	3	2	-	-	5	-
5	Grinding Activities	5	3	2	-	-	4	1
6	Welding Activities	7	4	1	2	-	6	1
7	Bench Work Activities	3	3	-	-	-	3	-

From the table above, data analysis was carried out using the model technique of *Miles and Huberman* by reducing data, presenting data, and drawing conclusions or verifying that the results of the research there were 41 hazards identified by:

1. 24 low hazards whose risk levels can still be managed. An example of a low-risk hazard is getting injured while installing a sharp chisel; injured because of placing an object that is not in the right place so that the milling blade bounces off; scratched by a sharp drill bit; and scalding hands when handling grinding objects.
2. 11 moderate hazards whose risk level is classified as serious injury and can be treated in a hospital. Examples are exposed to sparks from welds that cause burns; hair or clothes that get wrapped around the machine while it is turning; exposed to hot milling flakes that cause skin irritation; and hearing loss caused by the noise generated by blunt chisels.
3. 6 high hazards with high risk of causing serious injury and record permanent and substantial financial losses. Examples are not exposed to ultraviolet and infrared radiation which can cause skin irritation; a bad ventilation system can cause students to inhale the fumes of the combustion resulting from welding; placement of fire extinguishers that can cause panic and large fires; the absence of an evacuation route which makes the accident worse; and the absence of safety in the grinding area which causes the metal to be splashed from the grinding results which has the potential to be exposed to various diseases if exposed continuously.

There are several controls that have been planned by the school to reduce the dangers that occur in the workshop. There are 26 planned controls, such as removing light fire extinguishers; using a chisel that is still sharp and safe; using coolant during the turning process; shaving hair and not wearing long-sleeved wearpack when practicum; and moving the grinding machine to a safer place. In addition, teachers and workshop heads always remind students before practicum to comply with occupational safety and health in the workshop. Some controls have not been planned by the school, as many as 10 controls, for example, providing information on SOPs; making posters about occupational safety and health; providing evacuation routes; engineering the welding area to provide exhaust; providing a barrier to the grinding area; and moving the hand washing station outside the machining workshop.

## CONCLUSION

Based on the research data, it can be concluded that from the analysis using the HIRARC method with the model technique of Miles and Huberman, there are 41 hazards were identified with a risk level consisting of 24 low hazards, 11 moderate hazards, and 6 high hazards. Meanwhile, the risk control in the workshop consists of 26 planned risk control measures and 10 unplanned risk control measures. The researcher suggests that the management of VHS Taman Siswa 2 Jakarta can carry out internal audits and scale checks by paying attention to the occupational safety and health culture in the machining workshop area by involving all workshop users, with the head of the workshop, teachers, technicians, and students.

## REFERENCES

- [1] B. C. E. Atmojo and H. Koesyanto, "Potensi Bahaya Keselamatan dan Kesehatan Kerja di Bengkel Reparasi Elektronik," *HIGEIA (Journal of Public Health Research and Development)*, vol. 3, no. 3, pp. 394–406, 2019.
- [2] B. Wulandari, "Analisis Keselamatan dan Kesehatan Kerja Bengkel dan Laboratorium Jurusan Pendidikan Teknik Elektronika dan Informatika FT UNY," *Elinvo (Electronics, Informatics, and Vocational Education)*, vol. 3, no. 1, pp. 1–8, 2018.
- [3] M. Yamin, "Perilaku Keselamatan Dan Kesehatan Kerja (K3) Siswa Dalam Pembelajaran Praktikum Di SMKN 2 Sidenreng," *Jurnal Syntax Admiration*, vol. 1, no. 3, pp. 207–214, 2020.
- [4] M. Erfian and N. E. Raharjo, "Evaluasi Penerapan Keselamatan Dan Kesehatan Kerja (K3) Pada Praktik Finishing Bangunan SMK Negeri 2 Yogyakarta," *Jurnal Pendidikan Teknik Sipil*, vol. 2, no. 2, pp. 139–148, 2020.

- [5] J. Amiruddin, H. H. Sutrisno, and T. Triyono, "The Efforts to Increase the Awareness of the Danger of Fire by Using a Daily Assessment on the Safety Level of the Evacuation Route in Apartments (Vertical Housing)," *Int. J. Innov. Technol. Exploring Eng.*, vol. 8, p. 5, 2019.
- [6] H. H. Sutrisno, "Improving the Evacuation Time for an 8-Story Office Building Using Pathfinder," *Int. J. Mech. Eng. Technol.*, vol. 7, no. 4, 2018.
- [7] H. H. Sutrisno, "The Development of a Centrifugal Pump Nozzle for Firefighting Motorcycle," *Int. J. Mech. Eng. Robot. Res.*, pp. 321–327, 2021.
- [8] H. H. Sutrisno and T. Triyono, "Improvement of Performance and Design on Firefighter Motorcycle as a Fast Response to Decrease Fire Disaster in a Densely Populated Area," *Int. J. Mech. Eng. Robot. Res.*, pp. 655–659, 2019.
- [9] H. H. Sutrisno et al., "The identification of fire potentials in oil mining area on Minas Sumatera Operations-Indonesia by manual assessment method," *IOP Conf. Ser.: Mater. Sci. Eng.*, vol. 1098, no. 6, p. 062093, 2021.
- [10] H. H. Sutrisno, R. Wirawan, A. Febriani, and D. Ambarwati, "Analysis of fire rate on paper coated with the silica gel from rice husk ash," *J. Phys.: Conf. Ser.*, vol. 1402, p. 044052, 2019.
- [11] H. H. Sutrisno, R. Wirawan, and T. Triyono, "Uji Kemampu-Bakaran Pembungkus Kabel NYM Berstandar SNI Dengan Differential Scanning Calorimetric," *Setrum Jurnal Teknik Elektro*, vol. 2, no. 3, 2013.
- [12] T. Triyono and H. H. Sutrisno, "Implementation of VDI 2221 Method for Firefighter Motorcycle Design," *Int. J. Innov. Technol. Exploring Eng.*, vol. 8, no. 6S, p. 5, 2019.
- [13] H. H. Sutrisno, J. Amiruddin, and T. Triyono, "Improving the Evacuation Time for an 8-story Office Building Using Pathfinder," *Int. J. Mech. Eng. Technol.*, vol. 7, no. 4, 2018.
- [14] H. H. Sutrisno and F. M. Fransisca, "The Full Scale Fire Extinguisher Test For Silica Gel From Rice Husk Ash," *J. Crit. Rev.*, vol. 7, no. 9, p. 2070, 2020.
- [15] P. Hargiyanto, "Analisis kondisi dan pengendalian bahaya di bengkel/laboratorium sekolah menengah kejuruan," *J. Pendidikan Teknologi dan Kejuruan*, vol. 20, no. 2, 2011.