

## Subject Index

- A**
- Aplikasi**, 71, 135, 136, 138, 139, 140, 141, 142, 143, 145, 148
- C**
- Characters**, 75
- Corpus**, 59, 64, 72
- E**
- Education**, 2, 21, 22, 59, 71, 72, 75, 78, 79, 88, 89, 91, 109, 132, 147
- Efektivitas**, 135, 141, 145
- Epistemologi**, 91, 92, 93, 94, 103, 108, 109
- F**
- Feminism**, 111
- G**
- Generasi**, 135, 138, 139, 140, 142, 147
- H**
- Hadith**, 26, 75, 76
- Hijab**, 111, 120, 121, 122, 131, 132
- I**
- Islam**, 1, 60, 69, 72, 75, 76, 77, 78, 79, 83, 86, 88, 89, 91, 92, 93, 94, 95, 97, 98, 102, 103, 104, 106, 107, 108, 109, 111, 112, 114, 116, 117, 118, 119, 120, 123, 124, 125, 126, 127, 128, 129, 130, 131, 132, 147
- Islami**, 135, 136, 138, 139, 140, 141, 142, 143, 145
- K**
- Kepemimpinan**, 111, 112, 124, 126, 130, 131
- L**
- Learning**, 21, 75, 78, 79, 80, 87, 88, 89, 90, 132, 147
- M**
- Manusia**, 91, 94, 104, 106
- Metaphor**, 59, 62, 65, 71, 72, 73
- Moderasi**, 79, 84, 89, 91, 93, 94, 97, 102, 104, 106, 108
- Moderate**, 75, 77, 78, 79, 80
- Muslim**, 60, 75, 76, 77, 78, 80, 84, 85, 88, 102, 113, 117, 131, 135, 136, 137, 139, 142, 143, 148
- P**
- Parable**, 59, 65
- Pemikiran**, 3, 21, 71, 89, 111, 112, 113, 119, 120, 131, 132
- Perempuan**, 111, 112, 114, 115, 116, 117, 118, 120, 124, 125, 126, 127, 128, 129, 130, 131, 132
- Poligami**, 111, 127
- Prophet**, 25, 26, 85, 86
- Q**
- Qira`āt**, 1
- Qur'an**, 1, 2, 18, 21, 22, 53, 59, 64, 65, 71, 72, 79, 89, 91, 92, 93, 94, 95, 98, 99, 101, 102, 107, 109, 114, 115, 116, 118, 120, 121, 122, 124, 125, 127, 132, 135, 136, 137, 138, 139, 140, 141, 142, 143, 145, 146, 147
- R**
- Radicalism**, 75, 77
- Religious**, 75, 76, 77, 78, 79, 82, 83, 84, 88, 89, 147
- S**
- Stylistic**, 59, 62, 73
- T**
- Tafsir**, 1, 2, 20, 21, 93, 99, 101, 102, 105, 108, 109, 121, 123, 130
- V**
- Variety**, 1, 63, 77, 82, 83



## Author Index

عبد الرحمن السيد السيد عبدالغفار بلح, 1

### A

Adimin Diens, 119

Ari Hartawan, 137

### D

Dewi Suriyani Djamdjuri, 59

### I

Imamul Arifin, 137

### U

Umi Wasilatul Firdausiyah, 95

### Y

Yogi Dwi Prasetyo, 137

### K

Kerwanto, 75, 79, 80, 92

### M

M. Noor 'Ashry, 95

Moh. Abdul Kholiq Hasan, 37, 38

### P

Pandu Hyangsewu, 119

### S

Sari Narulita, 119, 134, 135

Siti Gomo Attas, 59

### Z

Zuriyati, 59



## Author Guidelines

**Jurnal Studi Al-Qur'an (JSQ)** is a [SINTA 3](#) accredited journal, published two times a year in January and July. **Jurnal Studi Al-Qur'an (JSQ)** contains scientific articles, research, community society research, and students' thesis reviewing socially religious problems and education issues by using the tafsir thematic perspective and Islamic Study approach.

The journal invites scholars and experts working in all disciplines in Islamic Studies. Articles should be original, research-based, unpublished, and not under review for possible publication in other journals. All submitted papers are subject to review by the editors.

**Jurnal Studi Al-Qur'an (JSQ)** covers the area of broader Islamic studies, which includes the Study of Qur'an, Quranic Exegesis, Hadith, Islamic Philosophy, Theology, Islamic Education, Dakwah, Islamic Economy, Languages related to Islam, and Islamic Mysticism. For the first time, **Jurnal Studi Al-Qur'an (JSQ)** published in 2005 as a printed edition with P-ISSN [0216-1648](#). In 2013 JSQ published an online version with E-ISSN [2339-2614](#).

## Sponsorship Disclosure

**Jurnal Studi Al-Qur'an (JSQ)** was published in cooperation of:

- Program Studi Pendidikan Agama Islam ([Department of Islamic Education](#)), Faculty of Social Science, Universitas Negeri Jakarta
- [ADPISI \(Asosiasi Dosen PAI Seluruh Indonesia\)](#)
- [APKI \(Asosiasi Prodi Keagamaan Islam\)](#).
- [LPPM UNJ](#)

## Peer Review Process

Reviewers, plus editorial comments, will review any accepted manuscript. The author is required to revise the manuscript according to the reviewer and editors comments. Editor team will process it for later publication. The review process can be separately described, as shown below.

## Plagiarism Screening

In publishing, **Jurnal Studi Al-Qur'an (JSQ)** strongly against any case of plagiarism on its own merits. JSQ commits to deterring plagiarism, including self-plagiarism.

The authors should ensure that they have written entirely original works, and if the authors have used the work and/or words of others, this has been appropriately cited or quoted. Papers found with such problems are automatically rejected, and authors are so advised.



Also, significant parts of the work have not been published. The author also respects the Author Guidelines of JSQ regarding the redundant, duplicate or fraudulent publication entirely.

Before the author submits the manuscript to **Jurnal Studi Al-Qur'an (JSQ)**, please check first to use a plagiarism checker. When submitting a published article for an originality check, **Jurnal Studi Al-Qur'an (JSQ)** recommends using Turnitin Plagiarism Scanner from <http://turnitin.com>. It is totally free and easy to use step-by-step process—the similarity rate allowed in the **Jurnal Studi Al-Qur'an (JSQ)** a maximum of 20 per cent. Before using Turnitin for the first time, we highly recommend that the author reads the instruction to use this plagiarism detector. **Jurnal Studi Al-Qur'an (JSQ)** also recommends using Turnitin Plagiarism Scanner from Plagiarism with the minimum unique 70 per cent.

## Manuscript Template

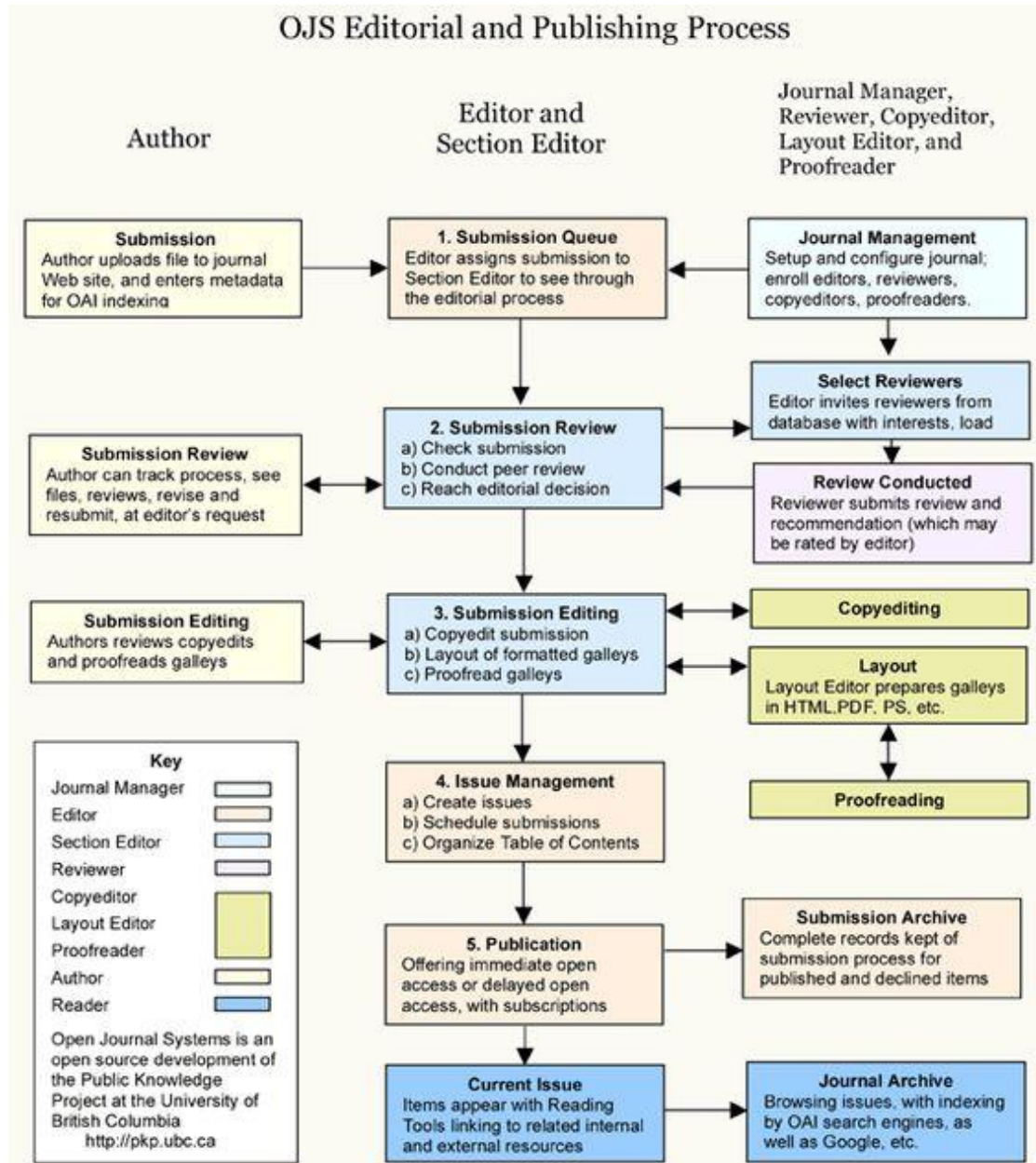
Manuscript Template of JSQ available in two versions. For authors, please download the following link.

- 1) [Manuscript Template \(English version\)](#)
- 2) [Manuscript Template \(Bahasa Indonesia version\)](#)
- 3) [Manuscript Template \(Arabic\)](#)

## Manuscript Assessment Process

Any accepted manuscript will be reviewed by at least two reviewers, plus editorial comments. The author is required to revise the manuscript according to reviewer comments and editors. Editor team will process it for later publication. For peer review process diagrams, please go to the Peer [Review Process page](#).

Any accepted manuscript will be reviewed by at least two reviewers, plus editorial comments. The author is required to revise the manuscript according to the reviewer and editors comments. Editor team will process it for later publication. The review process can be separately described, as shown below.



**Jurnal Studi Al-Qur'an is published in collaboration:**



Program Studi Pendidikan Agama Islam  
Fakultas Ilmu Sosial Universitas Negeri Jakarta



LPPM Universitas Negeri Jakarta



Asosiasi Dosen Pendidikan Agama Islam Seluruh Indonesia  
(ADPISI)



Asosiasi Prodi Keagamaan Islam (APKI)

