



## Subject Index

BehaviorsBehaviors

### A

**Adult**, 269, 278, 283  
**al- qowwam**, 206  
**Analysis**, 168, 169, 170, 171, 189, 207, 221,  
229, 245, 247, 279

### B

**Behavior**, 155, 170, 171, 172, 207, 221  
**Behaviours**, 155, 156, 157, 158, 161, 162,  
163, 164, 167, 239  
**Belief**, 155, 157, 169, 170, 172

### C

**Contemporary**, 190, 249

### D

**Dakhil**, 189, 190, 191, 199, 200, 203, 204  
**Descriptive**, 156, 174, 189, 192, 206, 227,  
230, 249

### E

**Elaboration**, 269, 273, 274, 276, 278, 279,  
280, 282, 283

### F

**Feminist**, 205  
**Framing**, 225, 233, 245, 247

### H

**Hadith**, 189, 194  
**Health**, 155, 157, 168, 169, 170, 171, 172,  
279, 283, 284  
**Humans**, 155, 160, 161, 162, 164, 166, 202,  
271

### I

**Ijtihady**, 249, 250, 267  
**Implications**, 269  
**Inference**, 173  
**Infiltration**, 189  
**Instagram**, 225, 226, 227, 229, 230, 232,  
234, 235, 240, 241, 242, 243, 244, 245,  
246  
**Intellectual**, 174, 271, 280  
**Interpretation**, 157, 174, 190, 191, 194,  
196, 198, 199, 200, 201, 202, 206, 225,  
226, 227, 228, 229, 235, 236, 237, 238,  
239, 240, 241, 242, 243, 245, 249  
**Interpretation**, 225, 229, 235, 242, 244,  
245  
**Islamic**, 160, 164, 169, 170, 174, 190, 200,  
201, 203, 245

### L

**Leadership**, 205, 206

### M

**Mawdhū'i**, 249, 250, 251, 252, 254, 255,  
256, 258, 265, 266, 267  
**Meaning**, 189, 271  
**Media**, 209, 213, 220, 221, 225, 226, 229,  
230, 231, 232, 236, 237, 243, 244, 245,  
246, 247  
**Memory**, 269, 270, 273, 276, 277, 278, 283  
**Model**, 155, 156, 157, 169, 170, 172, 274  
**Movement**, 193, 206  
**Mufassir**, 205, 206  
**Muhkamāt**, 189, 190, 191, 194, 196, 197,  
198, 199, 200, 203  
**Mutashabihāt**, 189, 190, 191

### P

**Perspectives**, 168, 205



## Q

**Qualitative**, 155, 157, 189, 206, 225, 227, 246, 249

**Qur'ān**, 168, 171, 189, 190, 191, 192, 194, 195, 196, 197, 198, 199, 201, 202, 203, 204, 206, 213, 221, 253, 254, 266, 267, 269, 270, 271, 272, 273, 274, 275, 276, 277, 278, 279, 280, 281, 282, 283, 284

**Qur'anic**, 156, 157, 174, 191, 207, 220, 225, 229, 242

## R

**Rational**, 173

**Reading**, 269, 271, 276, 278, 280, 281

## S

**Schools**, 174, 192

**Scientific**, 174, 191, 193, 199, 201, 238

## T

**Tafsir**, 170, 172, 174, 191, 192, 194, 195, 199, 203, 204, 205, 206, 207, 208, 220, 221, 226, 244, 245, 251, 252, 253, 256, 263, 265, 266, 267

**Tafsir**, 189, 191, 194, 197, 198, 200, 203, 204, 249, 250, 251, 252, 254, 255, 256, 258, 265, 266, 267

**Tendency**, 163, 164, 225, 226, 227, 228, 233, 234, 235, 238, 239, 240, 241, 242

**Thematic**, 155, 157, 158, 167, 239

## V

**Verse**, 189

## W

**Wasā'il**, 189, 190, 197, 198, 199, 200, 201, 202, 203

**Women**, 205, 206, 215, 216, 220, 225

**Works**, 189



## Author Index

A	ن
Abdul Kadir Riyadi, 189, 249	ناصر يحيى, 173
Ahmad Fatoni, 249	
Al-Saadi, 173, 174	و
Al-Sabouni, 173, 174	
Analia Millah Audina Haq, 249	واسكيتو ويپوو, 173
Asif Trisnani, 205, 209	
C	
Chandra Kartika Dewi, 155	
E	
Erna Multahada, 269	
F	
Fitri Masturoh, 205	
I	
Izzat Darwazah, 189, 190, 191, 192, 193, 194, 197, 198, 199, 200, 203, 204	
M	
Mahbub Ghozali, 225	
Moch. Ali Mutawakkil, 155	
Muhammad Toriq Nurmadiansyah, 225	
R	
Roem Rowi, 205	
S	
Salāh ‘Abdul Fattāh al-Khālidi, 249	
Solehodin, 189	
ش	
شاننا ياسمين, 173	



## Author Guidelines

**Jurnal Studi Al-Qur'an (JSQ)** is a [SINTA 3](#) accredited journal, published two times a year in January and July. **Jurnal Studi Al-Qur'an (JSQ)** contains scientific articles, research, community society research, and students' theses reviewing social and religious problems and education issues using the tafsir thematic perspective and Islamic study approach.

The journal invites scholars and experts working in all disciplines of Islamic Studies. Articles should be original, research-based, unpublished, and not under review for possible publication in other journals. All submitted papers are subject to review by the editors.

**Jurnal Studi Al-Qur'an (JSQ)** covers the area of broader Islamic studies, which includes the Study of the Qur'an, Quranic Exegesis, Hadith, Islamic Philosophy, Theology, Islamic Education, Dakwah, Islamic Economy, Languages related to Islam, and Islamic Mysticism. **Jurnal Studi Al-Qur'an (JSQ)** was published for the first time in 2005 as a printed edition with P-ISSN 0216-1648. In 2013, JSQ published an online version with E-ISSN.

## Sponsorship Disclosure

**Jurnal Studi Al-Qur'an (JSQ)** was published in cooperation with:

- Program Studi Pendidikan Agama Islam ([Department of Islamic Education](#)), Faculty of Social Science, Universitas Negeri Jakarta
- [ADPISI \(Asosiasi Dosen PAI Seluruh Indonesia\)](#)
- [APKI \(Asosiasi Prodi Keagamaan Islam\)](#).
- [LPPM UNJ](#)

## Peer Review Process

Reviewers, plus editorial comments, will review any accepted manuscript. The author must revise the manuscript according to the reviewer and editor's comments. The editor team will process it for later publication. The review process can be separately described, as shown below.

## Plagiarism Screening

In publishing, **Jurnal Studi Al-Qur'an (JSQ)** is firmly against any case of plagiarism on its own merits. JSQ commits to deterring plagiarism, including self-plagiarism.

The authors should ensure that they have written entirely original works, and if the authors have used the work and words of others, this has been appropriately cited or quoted. Papers found with such problems are automatically rejected, and authors are so advised. Also,



significant parts of the work have yet to be published. The author also respects the Author Guidelines of JSQ regarding redundant, duplicate, or fraudulent publication entirely.

Before the author submits the manuscript to **Jurnal Studi Al-Qur'an (JSQ)**, please check first to use a plagiarism checker. When submitting a published article for an originality check, **Jurnal Studi Al-Qur'an (JSQ)** recommends using Turnitin Plagiarism Scanner from <http://turnitin.com>. It is a free and easy-to-use step-by-step process—the similarity rate allowed in the Jurnal Studi Al-Qur'an (JSQ) is a maximum of 20 percent. Before using Turnitin for the first time, we highly recommend that the author read the instructions to use this plagiarism detector. **Jurnal Studi Al-Qur'an (JSQ)** also recommends using Turnitin Plagiarism Scanner from Plagiarism with a minimum unique 70 percent.

## Manuscript Template

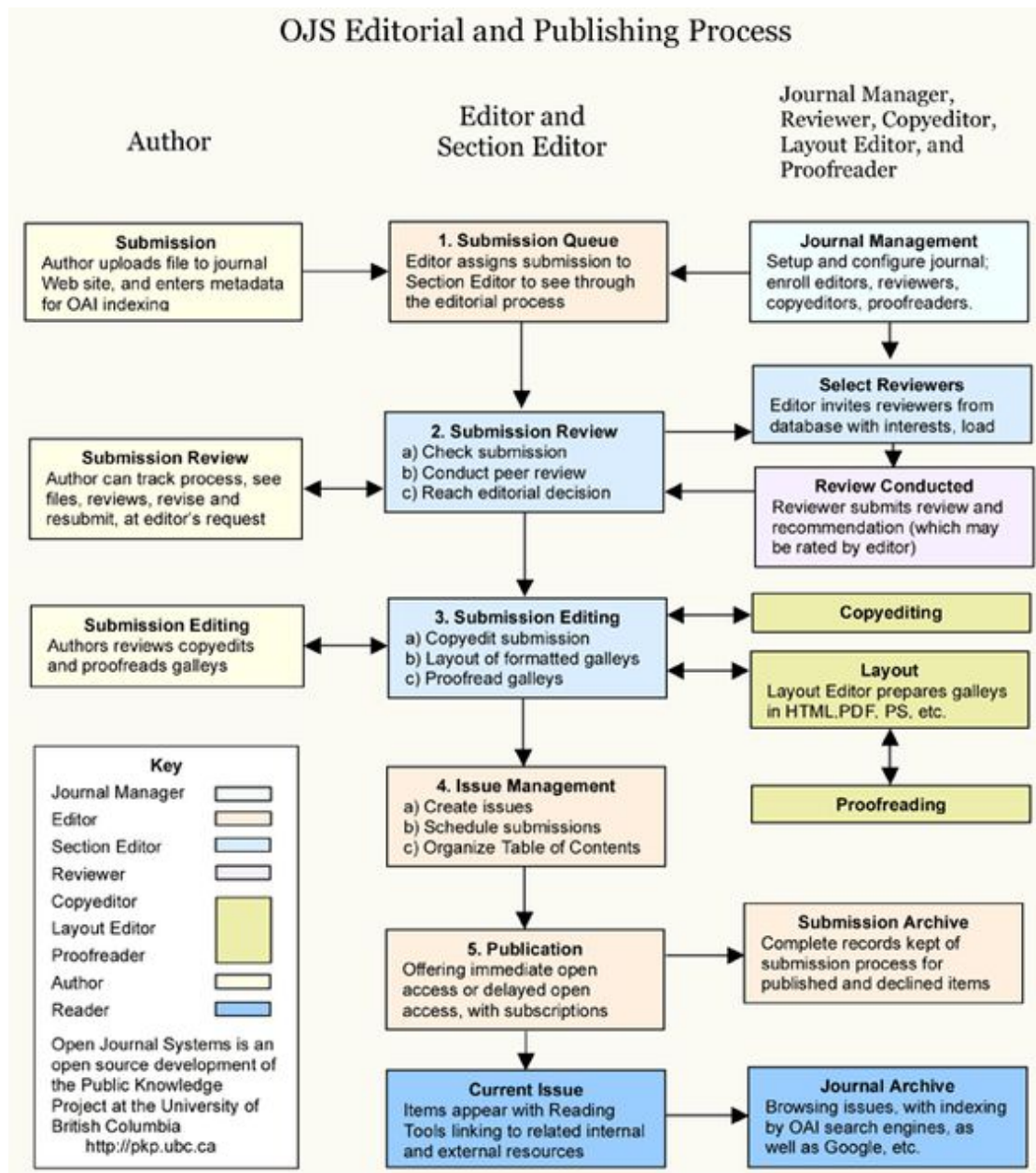
The Manuscript Template of JSQ is available in two versions. For authors, please download the following link.

- 1) [Manuscript Template \(English version\)](#)
- 2) [Manuscript Template \(Bahasa Indonesia version\)](#)
- 3) [Manuscript Template \(Arabic\)](#)

## Manuscript Assessment Process

Any accepted manuscript will be reviewed by at least two reviewers, plus editorial comments. The author must revise the manuscript according to reviewers' and editors' comments. The editor team will process it for later publication. Please go to the Peer Review Process page for peer review process diagrams.

Any accepted manuscript will be reviewed by at least two reviewers, plus editorial comments. The author must revise the manuscript according to the reviewer and editor's comments. The editor team will process it for later publication. The review process can be separately described, as shown below.



**Jurnal Studi Al-Qur'an is published in collaboration:**



Program Studi Pendidikan Agama Islam  
Fakultas Ilmu Sosial Universitas Negeri Jakarta



LPPM Universitas Negeri Jakarta



Asosiasi Dosen Pendidikan Agama Islam Seluruh Indonesia  
(ADPISI)



Asosiasi Prodi Keagamaan Islam (APKI)

