

Subject Index

- A**
- Al-Azhar, 163, 164, 165, 166, 176, 177,
178, 179, 180, 184, 201
Al-Kashaf, 109
- D**
- Dimensions, 163, 168
Disability, 122, 123, 124, 127, 133
Disambiguation, 218, 223
- E**
- Epistemologis, 135
Exclusive, 122, 130
- H**
- Hamka, 163, 164, 165, 166, 167, 168,
169, 170, 171, 172, 173, 174, 175, 177,
178, 179, 180
- I**
- Inclusive, 122, 124, 130
Indonesia, 122, 126, 128, 133, 134, 135,
163, 164, 177, 179, 182, 183, 184, 185,
186, 187, 189, 191, 192, 193, 194, 195,
196, 197, 198, 199, 200, 201, 202, 203,
204, 205, 207, 210, 211, 212, 213, 214,
215, 216, 219, 227
Influence, 177, 204
Instagram, 189, 190, 199, 200, 201, 204,
205, 206, 207, 208, 209, 210, 211, 212,
213, 214, 215, 217
Islamic, 109, 123, 126, 132, 133, 145,
161, 164, 165, 166, 167, 168, 176, 178,
180, 184, 188, 198, 202, 203, 206, 220,
221, 222, 224, 225, 227, 228
Istiwa, 109
- K**
- Khazin, 218, 220, 221, 222, 223, 224,
225, 226, 227, 228
Kontemporer, 135, 139, 140, 141, 144,
154, 160, 161, 162, 185, 190
- L**
- Linguistic, 109
- M**
- Maimun Zubair, 182, 183, 184, 185, 186,
187, 188, 189, 190, 191, 192, 193, 194,
195, 196, 197, 198, 199, 200, 201, 202,
203
Manifestation, 122
Maqamat, 163
Modern, 142, 143, 144, 148, 153, 159,
160, 161, 163, 165, 166, 176, 177, 179,
180, 193
Mu'utazili, 109
Muqodimah, 218, 223, 226
- N**
- Ngajilagi.id, 204
- P**
- Political, 164, 176, 182, 183, 184, 185,
191, 202, 203
- R**
- Religious, 164, 176, 182, 183, 184, 185,
191, 202, 220, 228
- S**
- Social, 125, 140, 162, 177, 182, 183, 184,
185, 191, 201, 202, 203, 205, 208
Sufism, 163, 164, 165, 166, 167, 168,
172, 175, 176, 177, 180
- T**
- Tafsir, 109, 123, 126, 134, 135, 136, 138,
139, 140, 141, 144, 145, 146, 147, 148,
149, 150, 154, 158, 160, 161, 162, 163,
164, 165, 166, 167, 168, 170, 172, 173,
174, 175, 176, 177, 178, 179, 180, 182,
183, 184, 185, 186, 187, 188, 189, 190,
191, 192, 193, 194, 196, 197, 201, 202,
203, 218, 219, 220, 221, 222, 226, 227,
228



Author Index

A

Ahmad Zaidanil Kamil, 182, 184, 185, 203
Asriati Aulia Malik, 204

C

Cecep Alba, 135

M

M. Daud Rhosyidy, 163
Maimun Zubair, 182, 183, 184, 185, 186,
187, 188, 189, 190, 191, 192, 193, 194,
195, 196, 197, 198, 199, 200, 201, 202,
203
Muhamad Redho Al Faritzi, 122
Muhammad Zaidan Irfan, 122

N

Niken Sylvia Puspitasari, 122

S

Sansan Ziaul Haq, 135, 137, 151, 158
Savira Manzilina, 182
ufyan Muttaqin, 135

Z

Zulkifli, 163



Author Guidelines

Jurnal Studi Al-Qur'an (JSQ) is a [SINTA 3](#) accredited journal, published two times a year in January and July. **Jurnal Studi Al-Qur'an (JSQ)** contains scientific articles, research, community society research, and students' theses reviewing social and religious problems and education issues using the tafsir thematic perspective and Islamic study approach.

The journal invites scholars and experts working in all disciplines of Islamic Studies. Articles should be original, research-based, unpublished, and not under review for possible publication in other journals. All submitted papers are subject to review by the editors.

Jurnal Studi Al-Qur'an (JSQ) covers broader Islamic studies, which include the Study of the Qur'an, Quranic Exegesis, Hadith, Islamic Philosophy, Theology, Islamic Education, Dakwah, Islamic Economy, Languages related to Islam, and Islamic Mysticism.

Jurnal Studi Al-Qur'an (JSQ) was first published in 2005 as a printed edition with P-ISSN 0216-1648. In 2013, it published an online version with E-ISSN.

Sponsorship Disclosure

Jurnal Studi Al-Qur'an (JSQ) was published in cooperation with:

- Program Studi Pendidikan Agama Islam ([Department of Islamic Education](#)), Faculty of Social Science, Universitas Negeri Jakarta
- [ADPISI \(Asosiasi Dosen PAI Seluruh Indonesia\)](#)
- [APKI \(Asosiasi Prodi Keagamaan Islam\)](#).
- [LPPM UNJ](#)

Peer Review Process

Reviewers, plus editorial comments, will review any accepted manuscript. The author must revise the manuscript according to the reviewer and editor's comments. The editor team will process it for later publication. The review process can be separately described, as shown below.

Plagiarism Screening

In publishing, **Jurnal Studi Al-Qur'an (JSQ)** is firmly against any case of plagiarism on its own merits. JSQ commits to deterring plagiarism, including self-plagiarism.

The authors should ensure that they have written entirely original works, and if the authors have used the work and words of others, this has been appropriately cited or quoted. Papers found with such problems are automatically rejected, and authors are so advised. Also,



significant parts of the work have yet to be published. The author also entirely respects the Author Guidelines of JSQ regarding redundant, duplicate, or fraudulent publication.

Before the author submits the manuscript to **Jurnal Studi Al-Qur'an (JSQ)**, please check first to use a plagiarism checker. When submitting a published article for an originality check, **Jurnal Studi Al-Qur'an (JSQ)** recommends using Turnitin Plagiarism Scanner from <http://turnitin.com>. It is a free and easy-to-use step-by-step process—the similarity rate allowed in the Jurnal Studi Al-Qur'an (JSQ) is a maximum of 20 percent. Before using Turnitin for the first time, we highly recommend that the author read the instructions for using this plagiarism detector. **Jurnal Studi Al-Qur'an (JSQ)** also suggests using the Turnitin Plagiarism Scanner from Plagiarism with a minimum unique 70 percent.

Manuscript Template

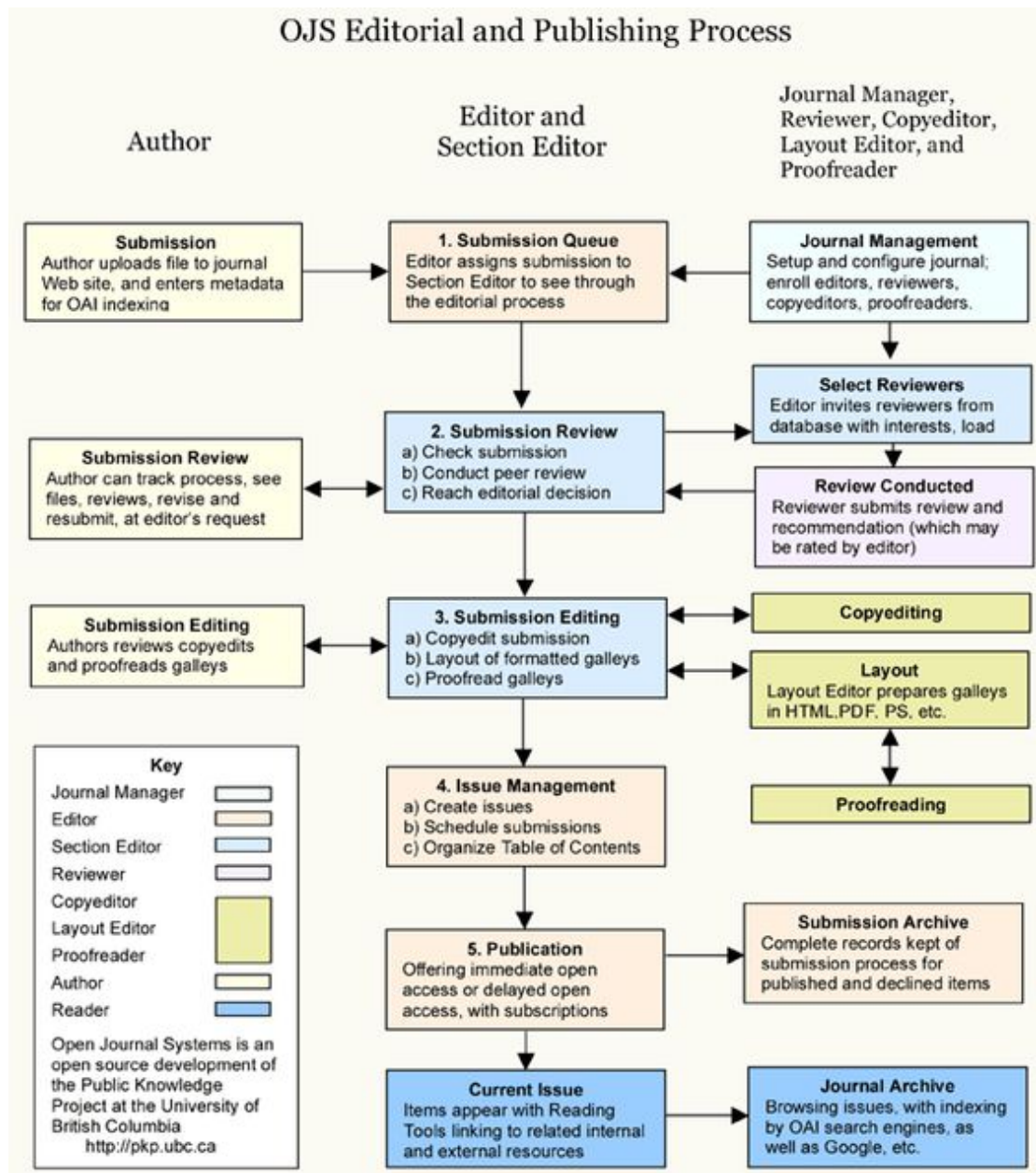
The Manuscript Template of JSQ is available in two versions. For authors, please download the following link.

- 1) [Manuscript Template \(English version\)](#)
- 2) [Manuscript Template \(Bahasa Indonesia version\)](#)
- 3) [Manuscript Template \(Arabic\)](#)

Manuscript Assessment Process

Any accepted manuscript will be reviewed by at least two reviewers, plus editorial comments. The author must revise the manuscript according to reviewers' and editors' comments. The editor team will process it for later publication. Please go to the Peer Review Process page for peer review process diagrams.

Any accepted manuscript will be reviewed by at least two reviewers, plus editorial comments. The author must revise the manuscript according to the reviewer and editor's comments. The editor team will process it for later publication. The review process can be separately described, as shown below.



Jurnal Studi Al-Qur'an is published in collaboration:



Program Studi Pendidikan Agama Islam
Fakultas Ilmu Sosial Universitas Negeri Jakarta



LPPM Universitas Negeri Jakarta



Asosiasi Dosen Pendidikan Agama Islam Seluruh Indonesia
(ADPISI)



Asosiasi Prodi Keagamaan Islam (APKI)

